

TempTale® RF Placement Instructions

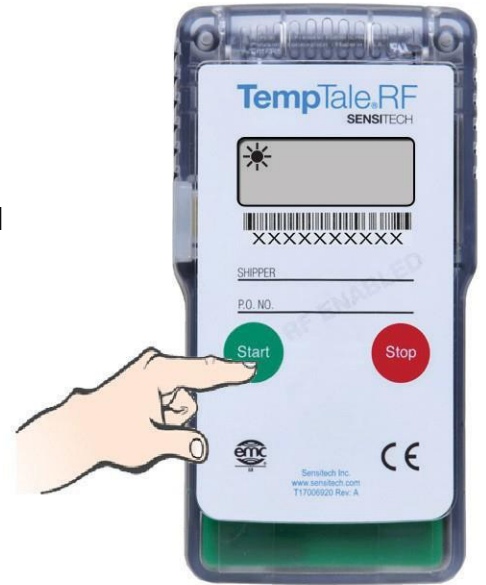
STEP 1 - Fill Out The TempTale RF Label

STEP 2 - Start The TempTale RF

Do not start the monitor until immediately before attaching it to the pallet. Press and hold the green start button for three seconds until the sun symbol ☀ appears on the LCD display, confirming that the monitor has started up correctly.

STEP 3 - Apply 3 Locator Stickers

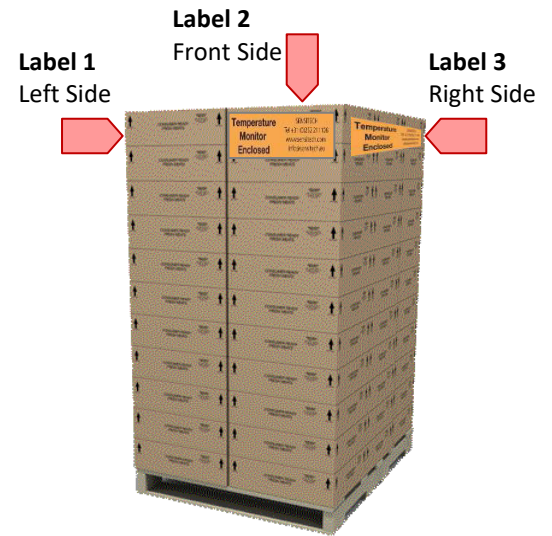
Place an orange “Temperature Monitor Enclosed” sticker on the left side, front and right side of the pallet or box.



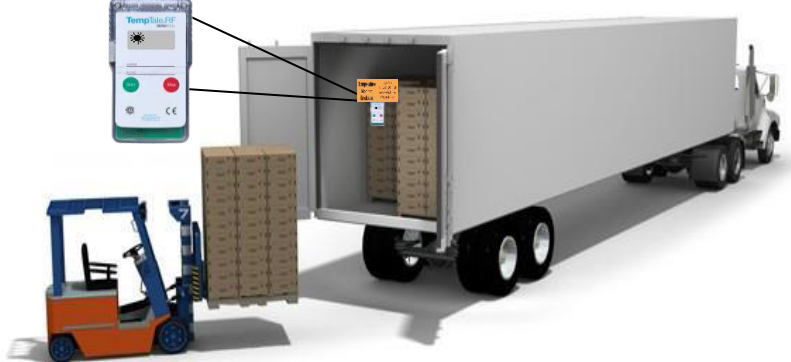
STEP 4 - Place The TempTale RF

Place the monitor on the **middle pallet in the truck**, in the second box from the top. The monitor **must not** be placed on the first or last row of pallets.

Place the logger in the **marked box directly on the goods**.



Temperature Monitor Enclosed
SENSITECH
Tel +31 (0)252 211 108
www.sensitech.com
info@sensitech.eu



IMPORTANT!!!

If a delivery on a truck consists of products (which require a temperature monitor) from both cold and warm temperature groups (mixed temperature truck), the TempTale RF Monitor must be placed on a cold product.